

2052 LEITCHFIELD ROAD



CONTACT: STEVEN BLOCK

PHONE: 270-925-9533

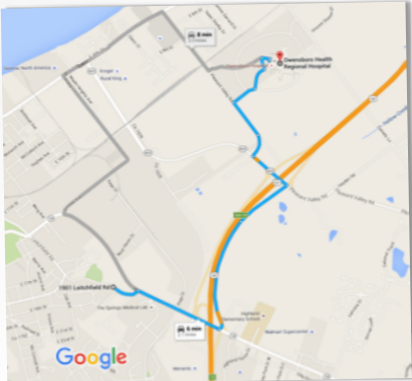
EMAIL: SQRBLK@LIVE.COM

9,200 SF - Professional office space

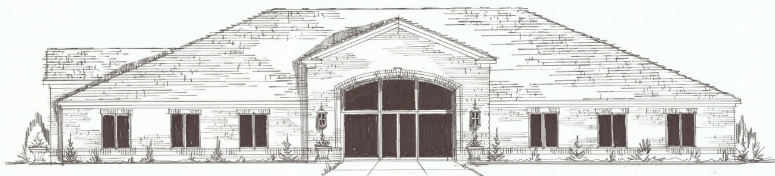
This space is available for \$21/sf - Triple Net Lease - Minimum of 60 months.

Build to suit, attractive office building, excellent location with high visibility. Willing to divide. There will be no one in the space above. Easy in/out access to space.

This space can be entered off Leitchfield Road or Highway 54/E Parrish Avenue. Owensboro Medical Health is 2.5 miles.



ROUTE TO HOSPITAL



FRONT OF BUILDING